

# **OPAL/Miner**

# **Installation Guide**

## Table of Contents

Introduction.....	1
Installation Process – Part 1 – Installing the Application Files .....	1
Installation Process – Part 2 – Completing the Installation/Upgrade .....	6
Uninstalling OPAL/Miner.....	9
Upgrade Notes.....	9
Installation Security Note .....	9

### Introduction

This document will step you through the process of installing OPAL/Miner either as a first time installation or as an upgrade from the SAP Data Downloader. Installation is a two part process. The first part uses a standard Windows installation process which installs the application files and sets up the environment. The second part is processed the first time you launch OPAL/Miner and sets up OPAL/Miner as either a new installation or as an upgrade.

### Important Pre-Installation Note for MS Access 2003

MS Access 2003 may show a prompt questioning whether to open the database. This is caused by the macro security level being set to medium or high. You must change the macro security level by following Tools → Macro → Security and selecting Low. If you do not change your macro security level then the installation process may fail.

### **\*\*\* IMPORTANT Upgrade Information \*\*\***

Those customers upgrading from OPAL/Miner version 4.01 or less who use the ODBC functionality will need to re-create the ODBC connection for each download specification that they have saved. This is due to a change in the way that the ODBC connection is managed. Please contact us at [support@opalsoft.com.au](mailto:support@opalsoft.com.au) if you need assistance with this.

### Installation Process – Part 1 – Installing the Application Files

1. To start the installation, run the downloaded installation program by locating it in Windows Explore and then double-clicking the file name. The installation program will be named OPALMinerSetup\_vXXX.exe where XXX is the version of OPAL/Miner that is being installed. The first screen to appear will be the one shown below in figure 1:

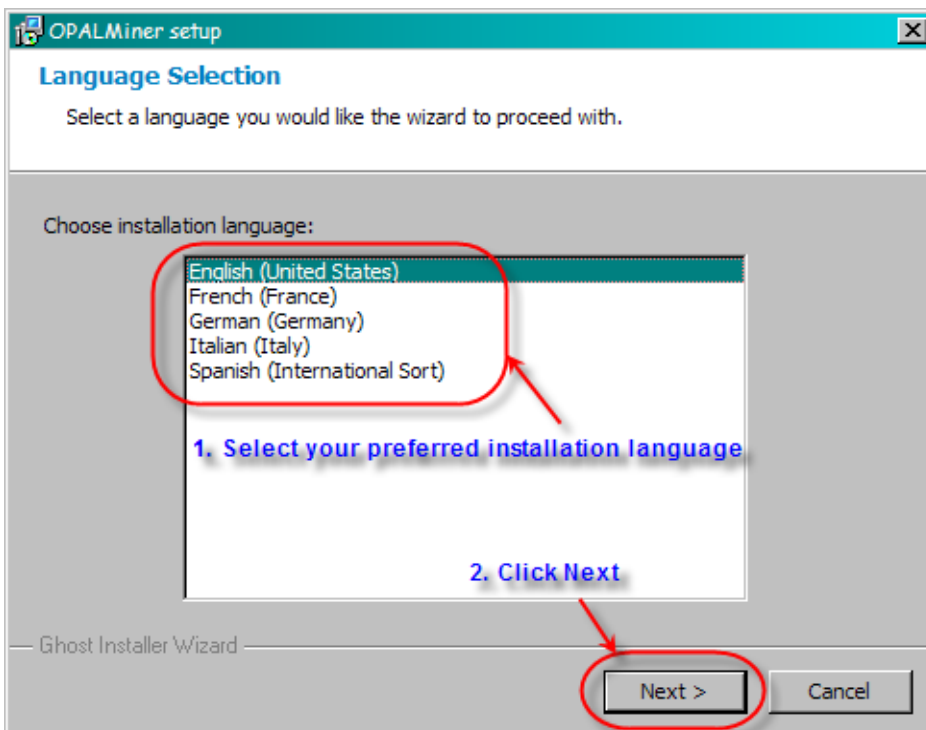


Figure 1

First highlight your preferred installation language and then click the Next button. The preferred installation language applies only to the installation process and not to the language that will be used when running OPAL/Miner. OPAL/Miner is shipped with the English language only.

## OPAL/Miner Installation Guide

- The next screen to appear is the welcome screen as shown in figure 2. Take the time now to close any open Windows programs and then click the Next button to continue.

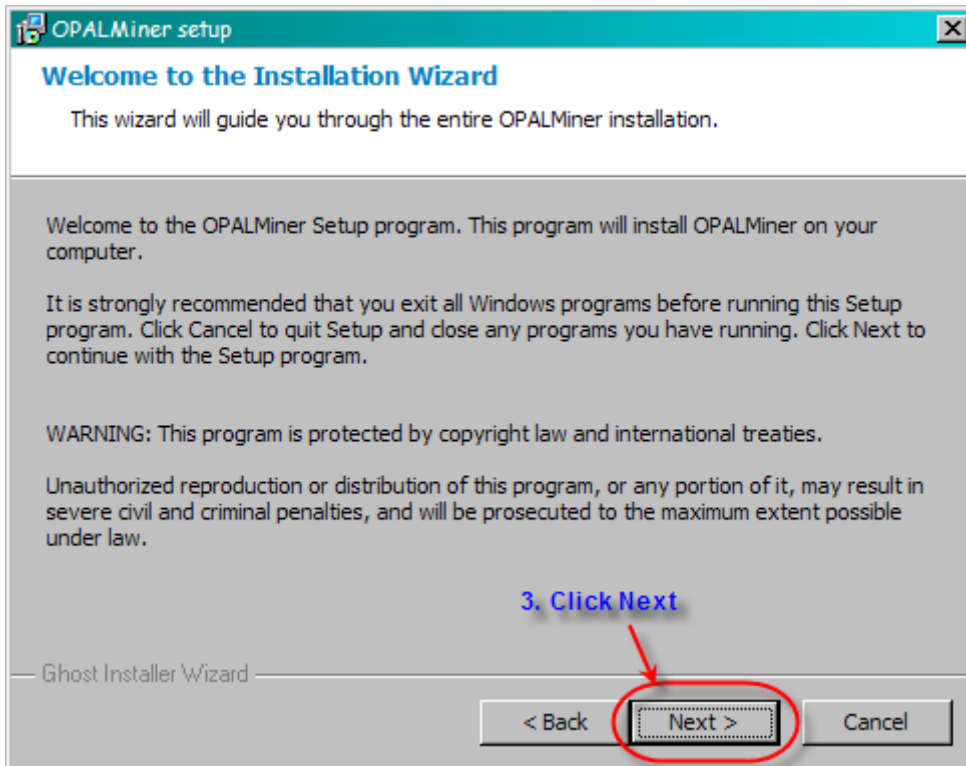


Figure 2

- The next screen to appear is the license agreement as shown in figure 3. Please ensure that you have read the agreement carefully. If you agree to the terms and conditions then click on the "Yes, I agree with all the terms of this license agreement" checkbox and then click the Next button.

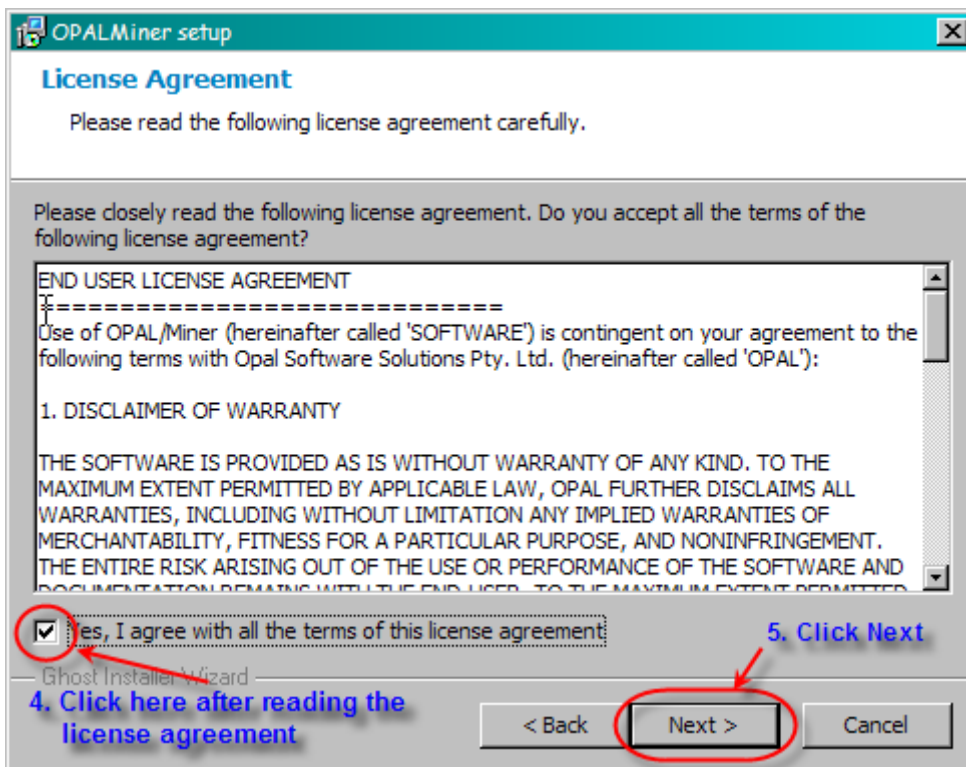


Figure 3

4. The next screen to appear allows you to select the Setup Type as shown in figure 4. OPAL/Miner is already highlighted so just click the Next button to continue.

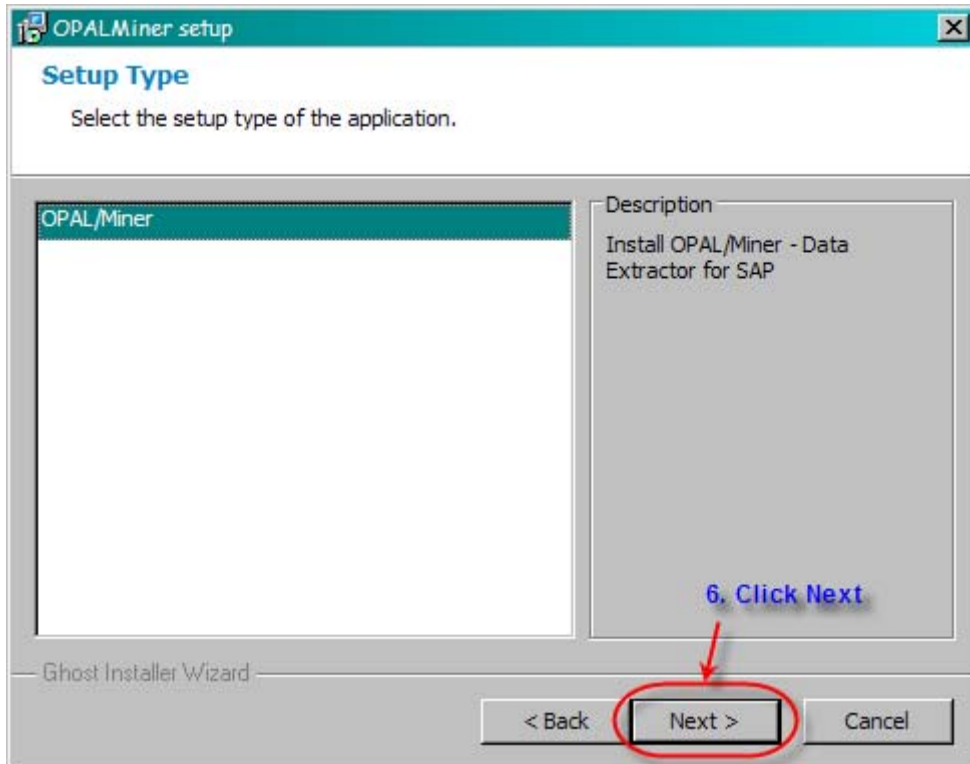


Figure 4

## OPAL/Miner Installation Guide

- The next screen shown in figure 5 allows you to select the folder location where OPAL/Miner should be installed to. If you already know the location you can manually enter it or click on the Browse button to point to that location. You may also modify the location once it has been selected. If the target folder does not exist, the installation process will ask if you want to create it. You will also be warned if the folder you have selected already exists and contains any files. It is recommended that you install OPAL/Miner in its own folder.



**Important Upgrade Note:** The setup process will automatically detect the location of an existing OPAL/Miner installation. In this case you should NOT change the target location. If you do change the target location, then a clean installation will be performed and none of your existing settings or specifications will be converted.

When complete, click the Next button.

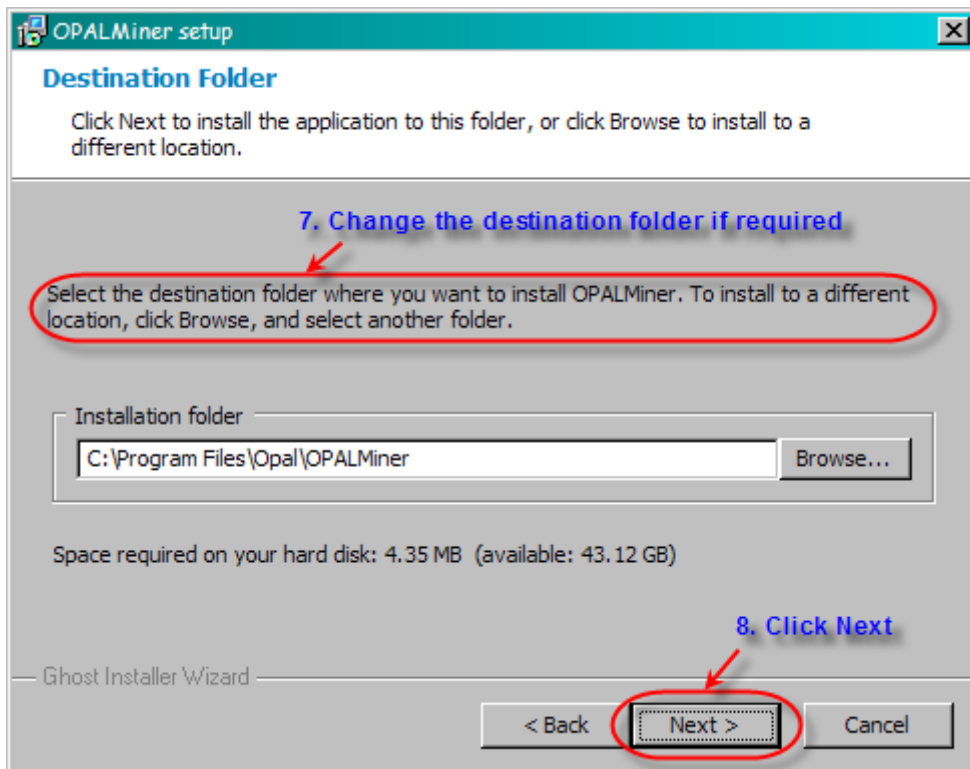


Figure 5

If you are upgrading an existing OPAL/Miner installation and have NOT changed the target installation directory, a message as shown below will be displayed after clicking the Next button. This is normal and you should respond by clicking the Yes button. In all other cases you should investigate the target folder and its contents before proceeding.



## OPAL/Miner Installation Guide

- On the next screen you may select the program group that will be created in your Start menu. You can leave the default or select another program group to install into. When complete, click the Next button.

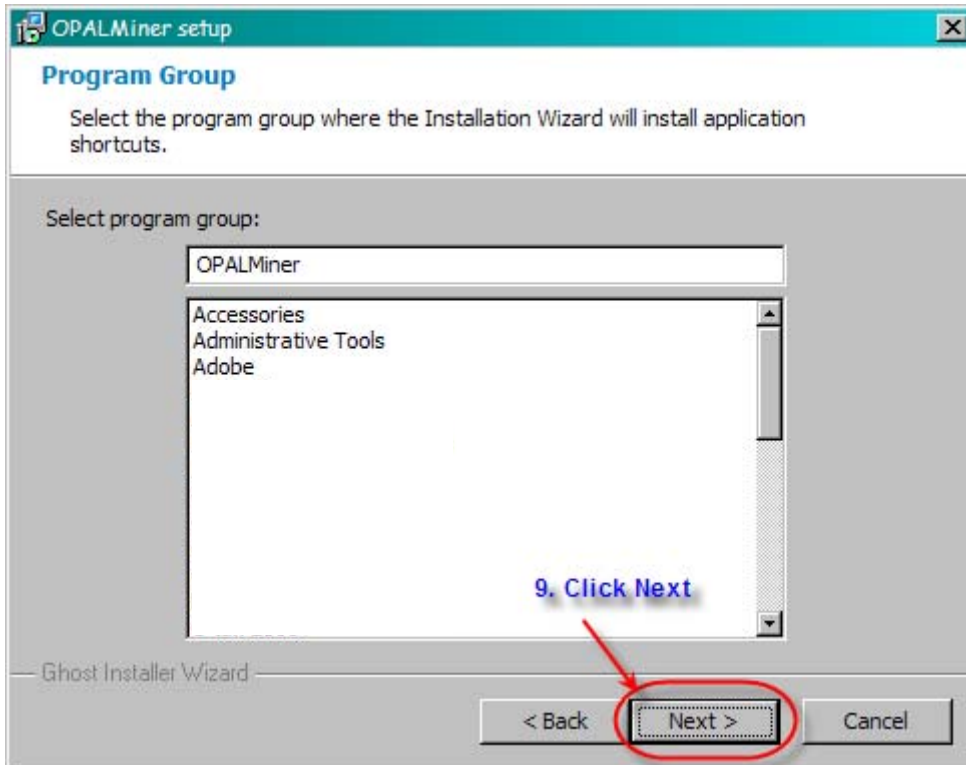


Figure 6

- You are now ready to begin the installation as shown in figure 7. Click the Next button to begin the installation or the Back button to change any values that were entered in previous screens. You may also cancel the installation by clicking the Cancel button.

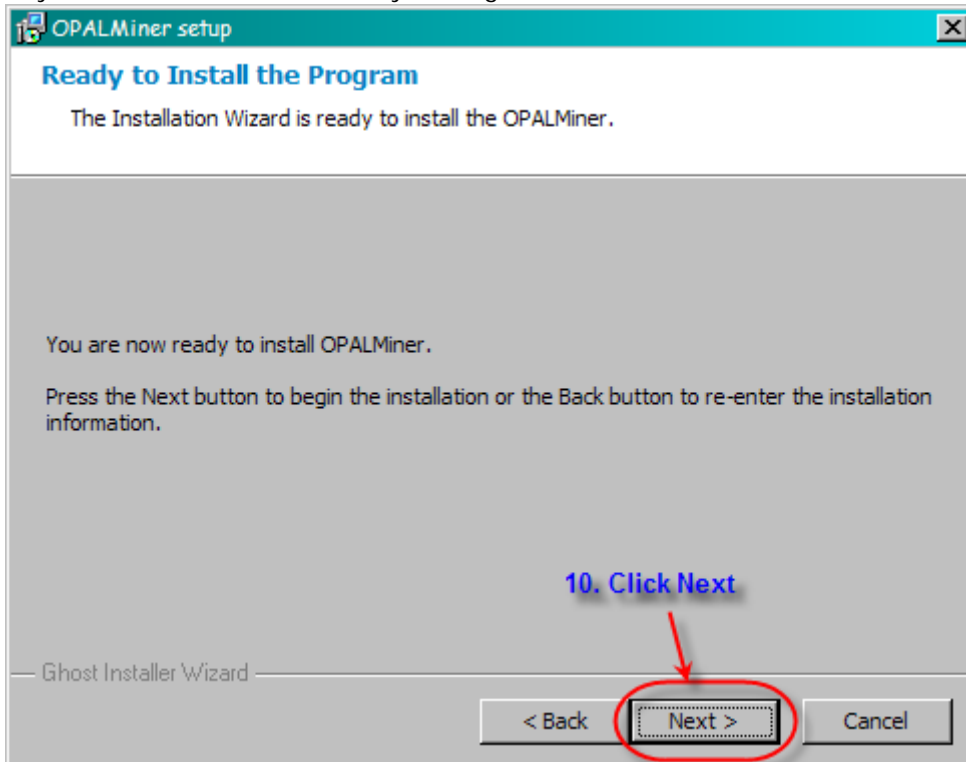


Figure 7

8. The next

screen to appear is the Setup Status screen shown in figure 8 which will display the progress of the installation.

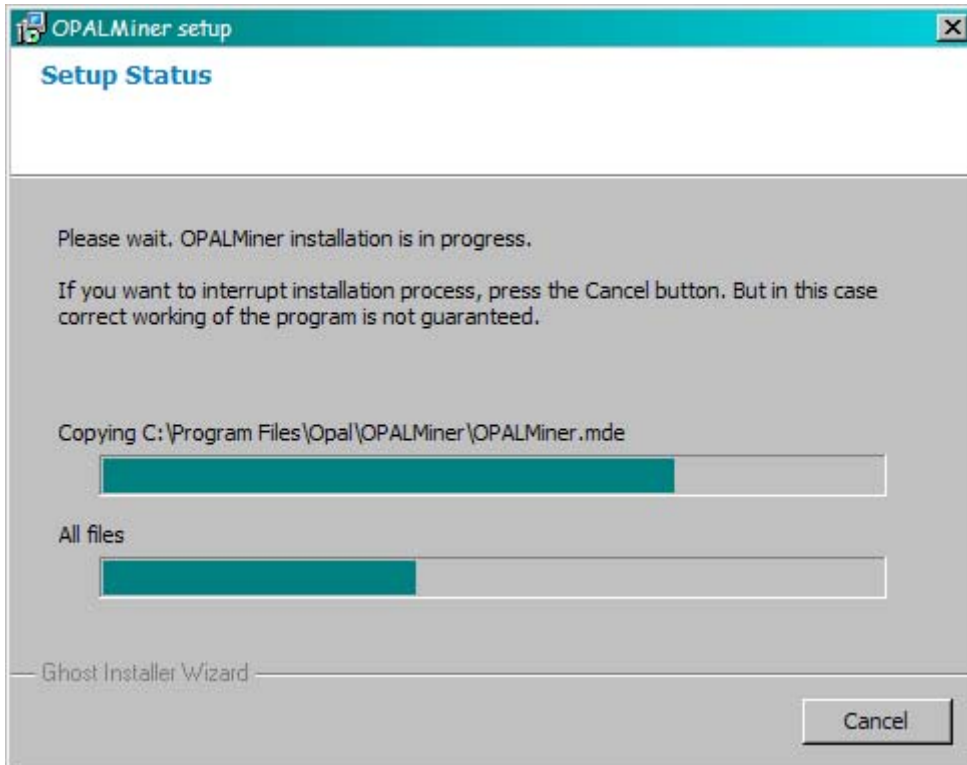


Figure 8

- The final screen to appear is shown in figure 9. We recommend that you enable the “Run OPAL/Miner” checkbox as this will launch OPAL/Miner and complete the installation process. If you do not want to complete the installation process at this time then uncheck this box. The installation process will begin when you first run OPAL/Miner. You can also optionally view the OPAL/Miner manual at this time. Click the Finish button.

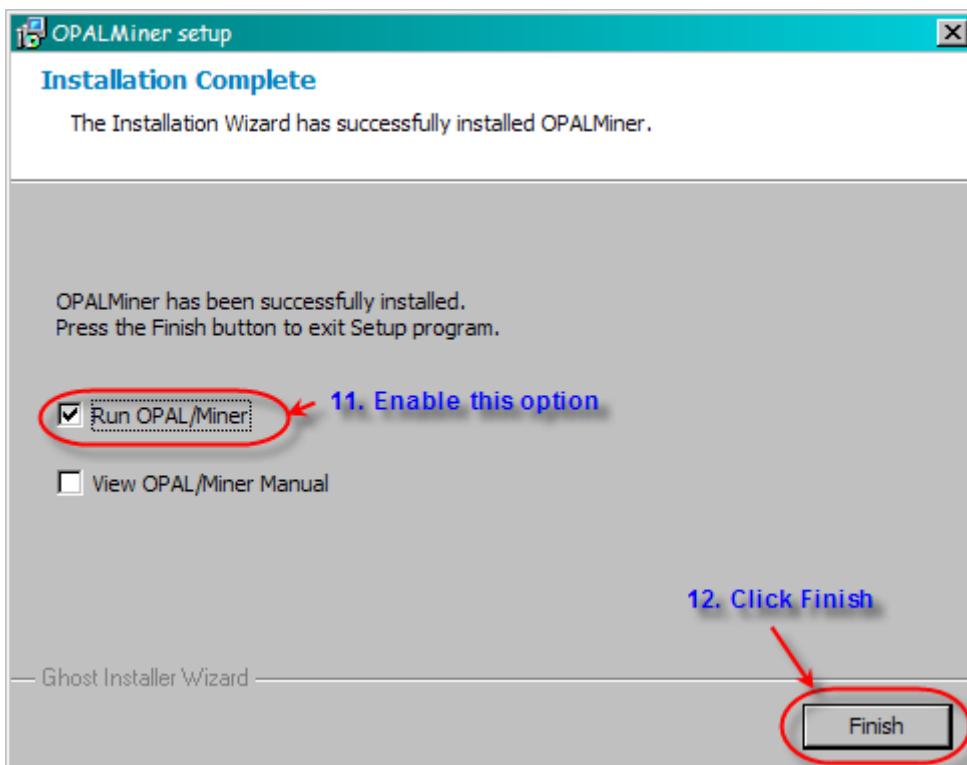


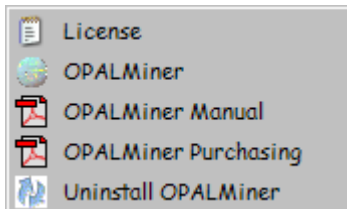
Figure 9

### Installation

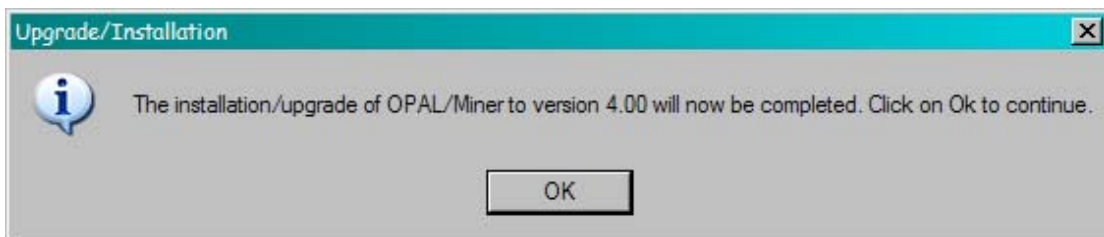
### Process – Part 2 – Completing the Installation/Upgrade

In Part 1, we installed the files and prepared your system. This next part of the installation process is managed from within OPAL/Miner and will perform the required actions to complete a clean, first-time installation or upgrade from a previous version of the SAP Data Downloader.

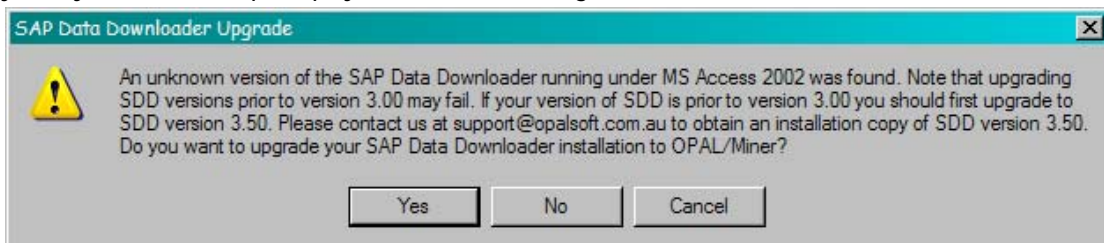
1. If you elected not to run OPAL/Miner in item 9 of part 1 of the installation then click Start → Programs → OPALMiner and then click on OPALMiner. The shortcut menu appears as shown below:



2. When you start OPAL/Miner the following message will be displayed to indicate that OPAL/Miner has detected a new installation. Click on the Ok button to continue.

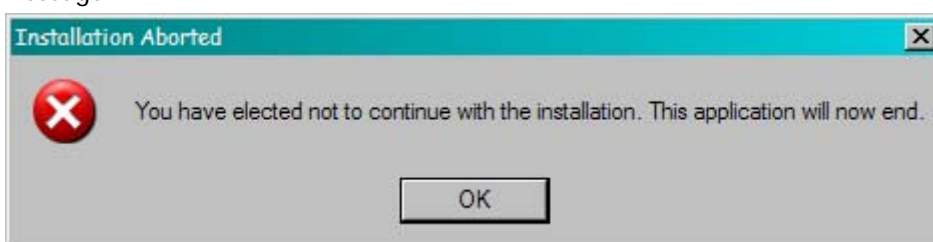


3. OPAL/Miner will automatically detect if you have a version of the SAP Data Downloader installed on your system and will prompt you with the message below to decide a course of action.



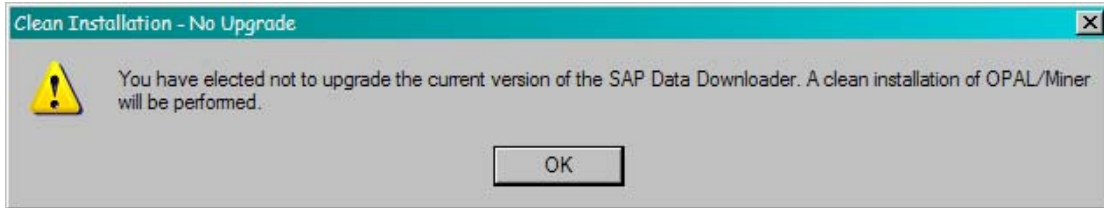
If you have version 3.00 or greater of the SAP Data Downloader on your system and you want OPAL/Miner to retain all of your download specifications and settings then you should click the Yes button to perform the upgrade.

Clicking the Cancel button will abort this part of the installation. If you do click the Cancel button, the next time you start OPAL/Miner it will again step you through this second part of the installation beginning with step 1 above. Clicking the Cancel button will display the following message:

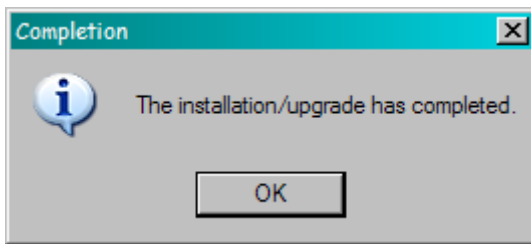


## OPAL/Miner Installation Guide

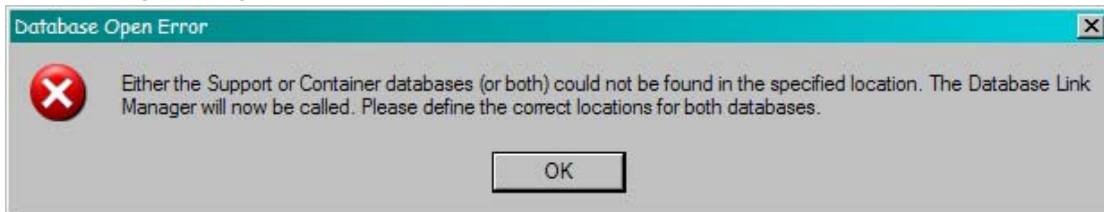
If you clicked on the No button to not perform an upgrade then a clean installation will be performed. Any previous settings from the SAP Data Downloader will not be converted. To make you aware of this you will be shown the message below. Click on Ok to continue.



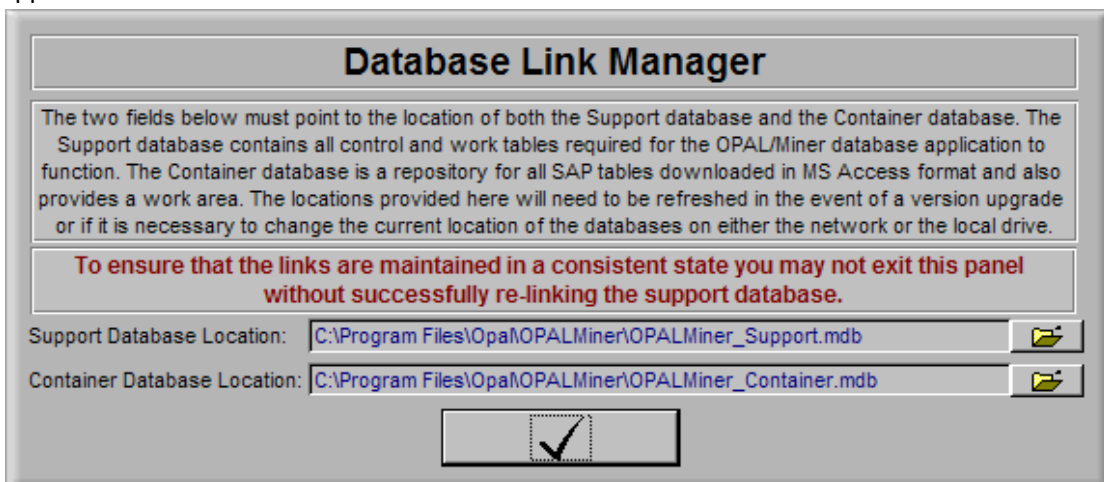
4. When the process has completed you will receive a completion message as shown below. Click the Ok button.



5. As a final step OPAL/Miner will now link the Support and Container databases. This is indicated by the following message. Click the Ok button.

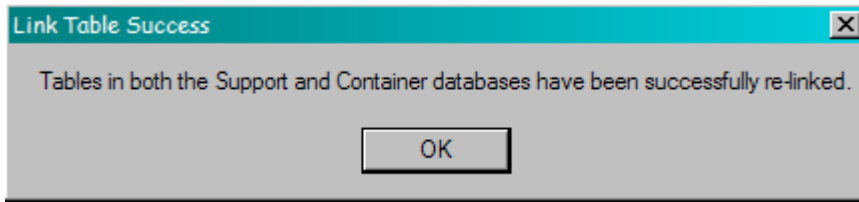


6. When you click the Ok button to the message above, the Database Link Manager screen will appear as shown here.



The database locations will already be predefined so the only action required here is to click on the Checkmark button.

7. When the Support and Container databases have been linked, a final completion message will be shown.



Click on Ok.

8. The OPAL/Miner application will now start and you are ready to begin downloading data from your SAP system.

### **Uninstalling OPAL/Miner**

To uninstall OPAL/Miner, click Start → Programs → OPALMiner and then click on Uninstall OPALMiner. This will permanently remove all files, folders, and registry entries associated with the OPAL/Miner installation.

### **Upgrade Notes**

#### Upgrading to Version 4.10

There has been a significant change in the batch scheduler functionality which allows for the independent scheduling of different batches. If upgrading from a version earlier than v4.10 and the batch scheduler is being used then you will need to review your scheduling setup. Existing schedules will no longer function.

### **Installation Security Note**

#### Installing Version 4.41 and greater for MS Access 2007 and higher

You need to be aware that the installation process will define the target OPAL/Miner installation folder and any subfolders as a Trusted Location. This is required to ensure that both the final installation and OPAL/Miner itself function correctly.